



# INDOFINE Chemical Company, Inc.

121 Stryker Lane, Bldg. 30, Suite 1 • Hillsborough, NJ 08844 • U.S.A.

Phone: (908) 359-6778 • FAX: (908) 359-1179

website: [www.indofinechemical.com](http://www.indofinechemical.com)

e-mail: [chemical@indofinechemical.com](mailto:chemical@indofinechemical.com)

## CERTIFICATE OF ANALYSIS

Cat No.: 04-1831

Product: **5-HYDROXY-L-TRYPTOPHAN**  
(-)-5-Hydroxy-L-tryptophan

Cas Number: [4350-09-8]

Lot Number: 0511092

Chemical Formula:  $C_{11}H_{12}N_2O_3$

Molecular Weight: 220.22

Melting Point 256-258°C (d)

Appearance: Off white powder

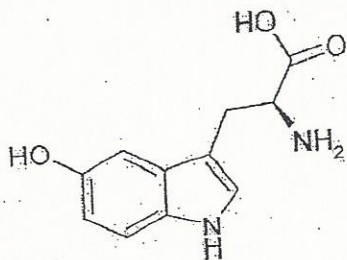
TLC: n-Butanol: Acetic acid (1:1)

Solubility: Soluble in DMSO

NMR Spectrum: Enclosed

Storage: Cool dry place

Purity (HPLC): 99.86%





# INDOFINE Chemical Company, Inc.

121 Stryker Lane, Bldg. 30, Suite 1 • Hillsborough, NJ 08844 • U.S.A.

Phone: (908) 359-6778 • FAX: (908) 359-1179

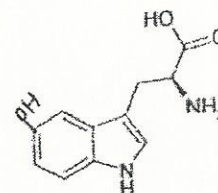
website: [www.indofinechemical.com](http://www.indofinechemical.com)

e-mail: [chemical@indofinechemical.com](mailto:chemical@indofinechemical.com)

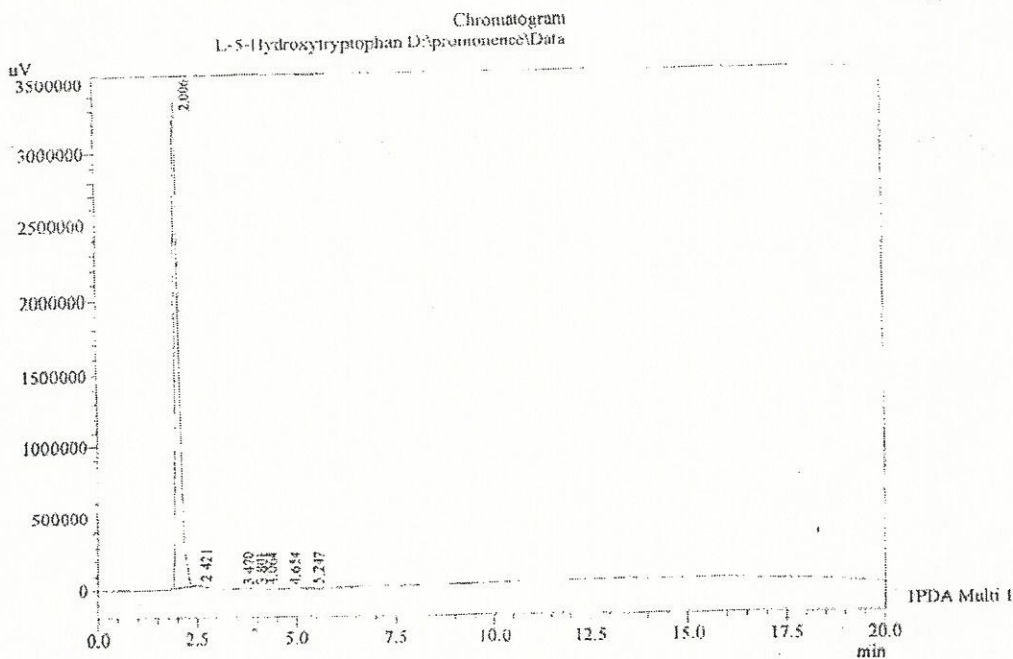
## HPLC ANALYSIS

Acquired by : Sanjeev  
Sample Name : L-5-Hydroxytryptophan  
Sample ID : Lot No.-0511092  
Injection Volume : 20 uL  
Data Filename : 010612H.kcd  
Method Filename : Linear Isocratic.M.lcm

Catalog no.: 04-1831  
Product name: 5-Hydroxy-L-tryptophan  
Lot No.: 0511092



Column : LUNA C-18(2), (250mm x4.6mm 5.0µ)  
Flow : 1.000 mL/min.  
Mobile Phase : A(30% of 0.05% TFA in water) B(70% of Acetonitrile)



1 IPDA Multi 1 / 220nm 4nm

Peak Table

Peak#	Name	Ret. Time	Area	Area %	Relative Retention Time
1	RT:2.006	2.006	27296170	99.86	1.00
2	RT:2.421	2.421	19590	0.07	1.21
3	RT:3.470	3.470	3828	0.01	1.73
4	RT:3.801	3.801	2475	0.01	1.89
5	RT:4.064	4.064	1995	0.01	2.03
6	RT:4.654	4.654	1943	0.01	2.32
7	RT:5.247	5.247	9595	0.04	2.62
Total			27335595	100.00	



# INDOFINE Chemical Company, Inc.

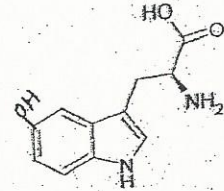
121 Stryker Lane, Bldg. 30, Suite 1 • Hillsborough, NJ 08844 • U.S.A.

Phone: (908) 359-6778 • FAX: (908) 359-1179

website: [www.indofinechemical.com](http://www.indofinechemical.com)

e-mail: [chemical@indofinechemical.com](mailto:chemical@indofinechemical.com)

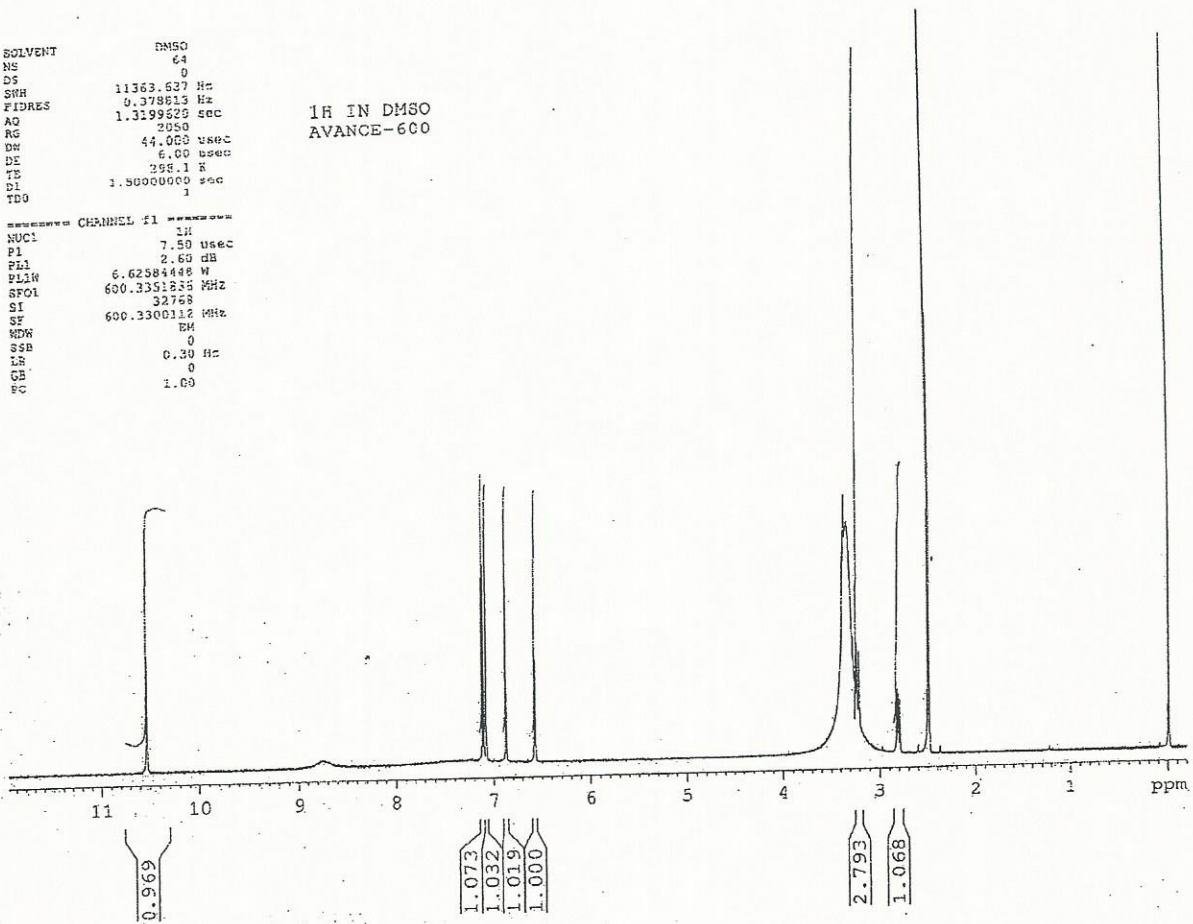
Catalog no.: 04-1831  
Product name: 5-Hydroxy-L-tryptophan  
Lot No.: 0511092



SOLVENT DMSO  
NS 64  
DS 0  
SRH 11363.637 Hz  
FIDRES 0.378615 Hz  
AQ 1.3199529 sec  
RG 2050  
RC 44.050 usec  
DW 6.00 usec  
DE 258.1 Å  
TE 1.5000000 sec  
TD0 1

1H IN DMSO  
AVANCE-600

\*\*\*\*\* CHANNEL #1 \*\*\*\*\*  
NUC1 1H  
PI 7.50 usec  
PL 2.60 dB  
PL1H 6.62584448 W  
SFO1 600.3351235 MHz  
SI 32768  
SF 600.3300112 MHz  
MDW 0  
SSB 0  
LR 0.30 Hz  
GB 0  
FC 1.00





# INDOFINE Chemical Company, Inc.

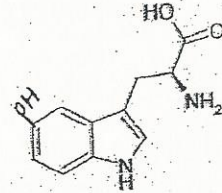
121 Stryker Lane, Bldg. 30, Suite 1 • Hillsborough, NJ 08844 • U.S.A.

Phone: (908) 359-6778 • FAX: (908) 359-1179

website: [www.indofinechemical.com](http://www.indofinechemical.com)

e-mail: [chemical@indofinechemical.com](mailto:chemical@indofinechemical.com)

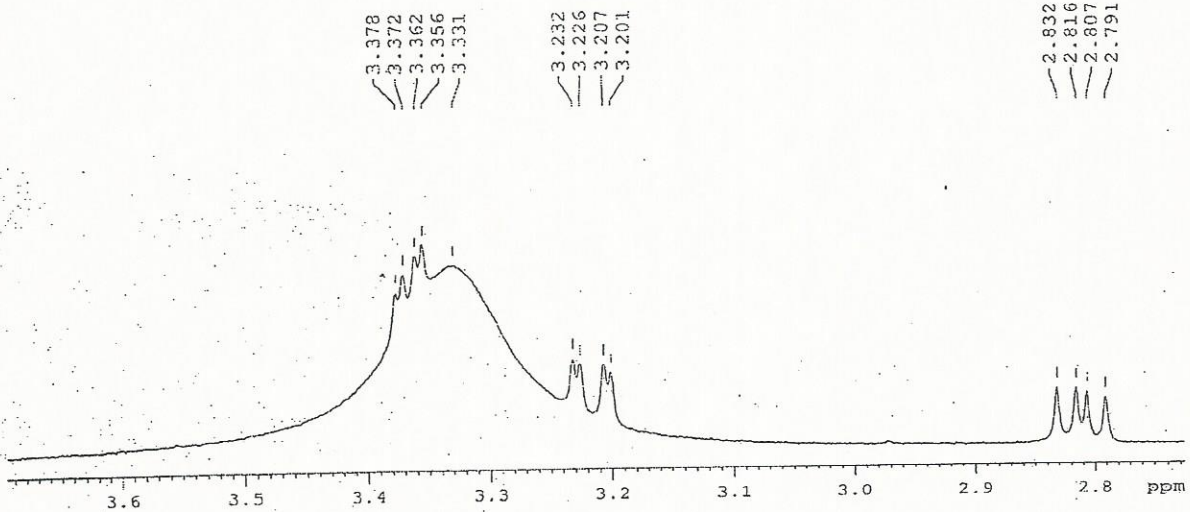
Catalog no.: 04-1831  
Product name: 5-Hydroxy-L-tryptophan  
Lot No.: 0511092



SOLVENT DMSO  
NS 64  
DS 0  
SWH 11363.637 Hz  
FIDRES 0.378613 Hz  
AQ 1.3199620 sec  
RG 2058  
DN 44.000 usec  
DE 6.00 usec  
TE 298.1 K  
DL 1.50000000 sec  
TDC 1

<sup>1</sup>H IN DMSO  
AVANCE-600

----- CHANNEL f1 -----  
NUC1 <sup>1</sup>H  
P1 7.50 usec  
PL1 2.60 dB  
PL1W 6.82584418 W  
SFO1 600.3351836 MHz  
SI 32768  
SF 609.3330112 MHz  
WDW EM  
SSB 0  
LB 0.30 Hz  
GB 0  
PC 1.00





# INDOFINE Chemical Company, Inc.

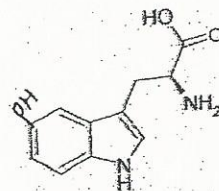
121 Stryker Lane, Bldg. 30, Suite 1 • Hillsborough, NJ 08844 • U.S.A.

Phone: (908) 359-6778 • FAX: (908) 359-1179

website: [www.indofinechemical.com](http://www.indofinechemical.com)

e-mail: [chemical@indofinechemical.com](mailto:chemical@indofinechemical.com)

Catalog no.: 04-1831  
Product name: 5-Hydroxy-L-tryptophan  
Lot No.: 0511092



SOLVENT DMSO  
NS 64  
DS 0  
SWH 11363.637 Hz  
FIDRES 0.378813 Hz  
AQ 1.3195320 sec  
RG 2050  
SW 44.000 usec  
DE 6.00 usec  
TE 299.1 K  
D1 1.5000000 sec  
TD0 1

1H IN DMSO  
AVANCE-600

===== CHANNEL f1 =====  
NUC1 1H  
P1 7.50 usec  
PL1 2.00 dB  
PLIN 6.6258448 W  
SFO1 600.3351836 MHz  
SI 32768  
SF 600.3300112 MHz  
WDW EM  
SSB 0  
LB 0.30 Hz  
GB 0  
PC 1.00

